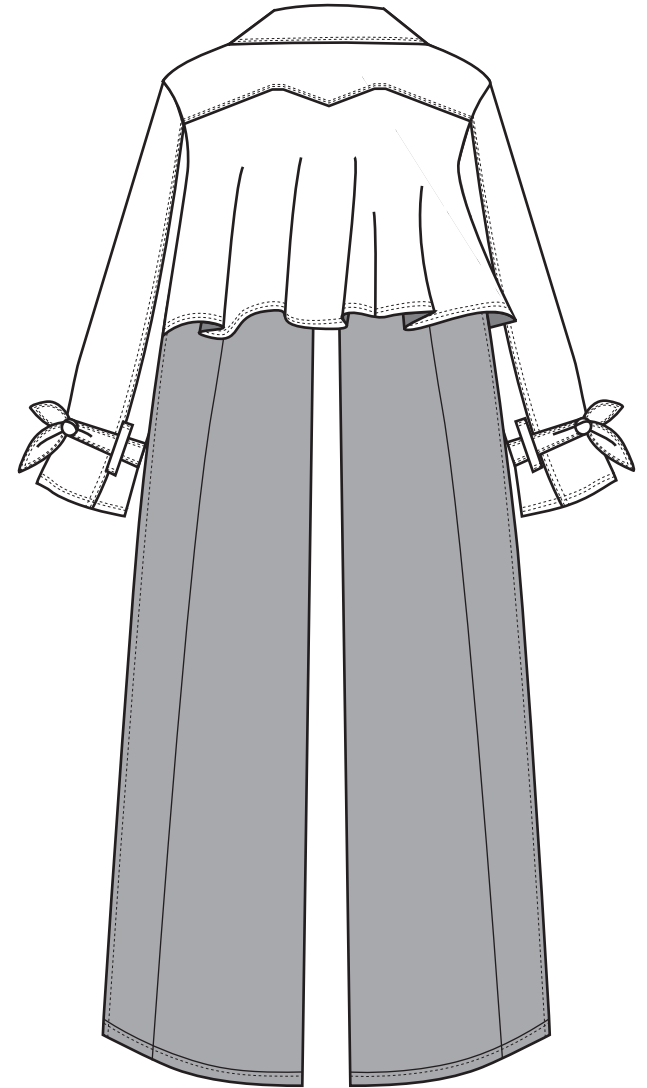
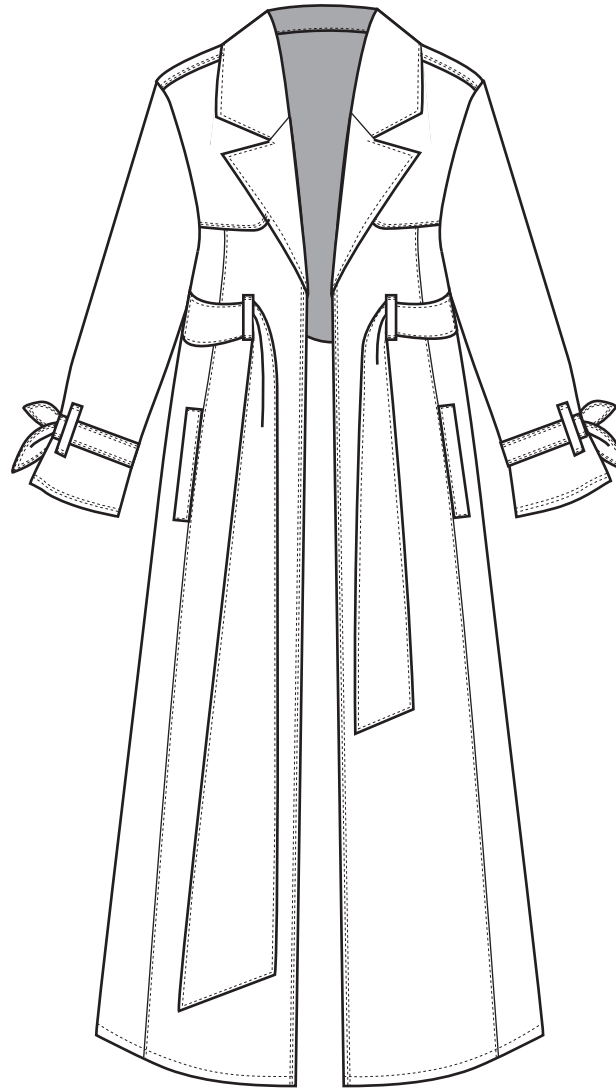
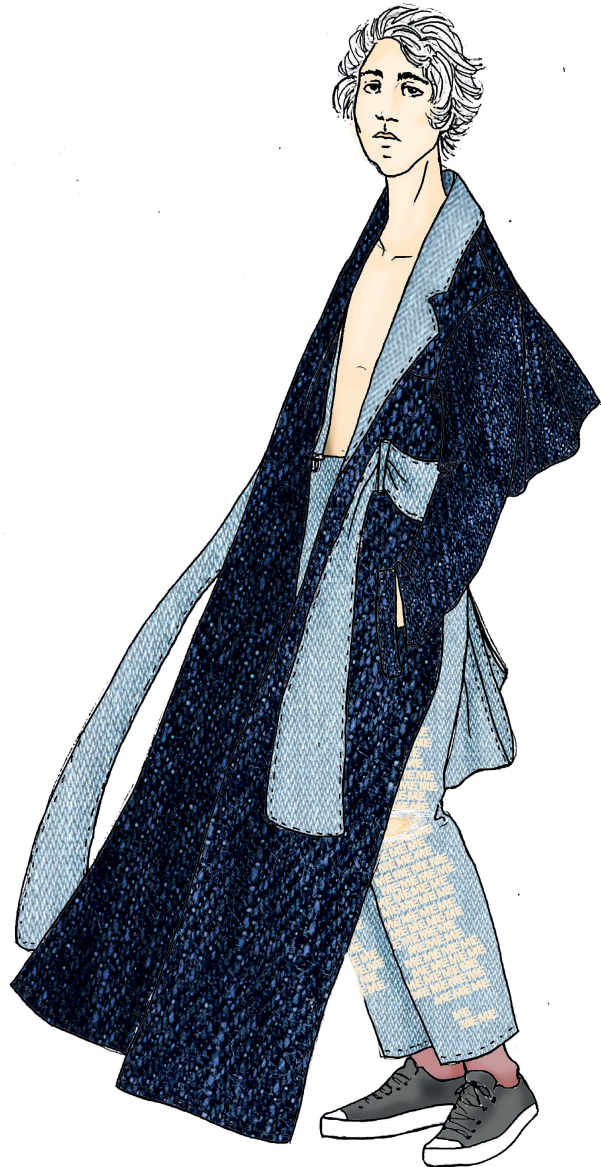


BACKLESS TRENCH COAT 1/10
MENSWEAR

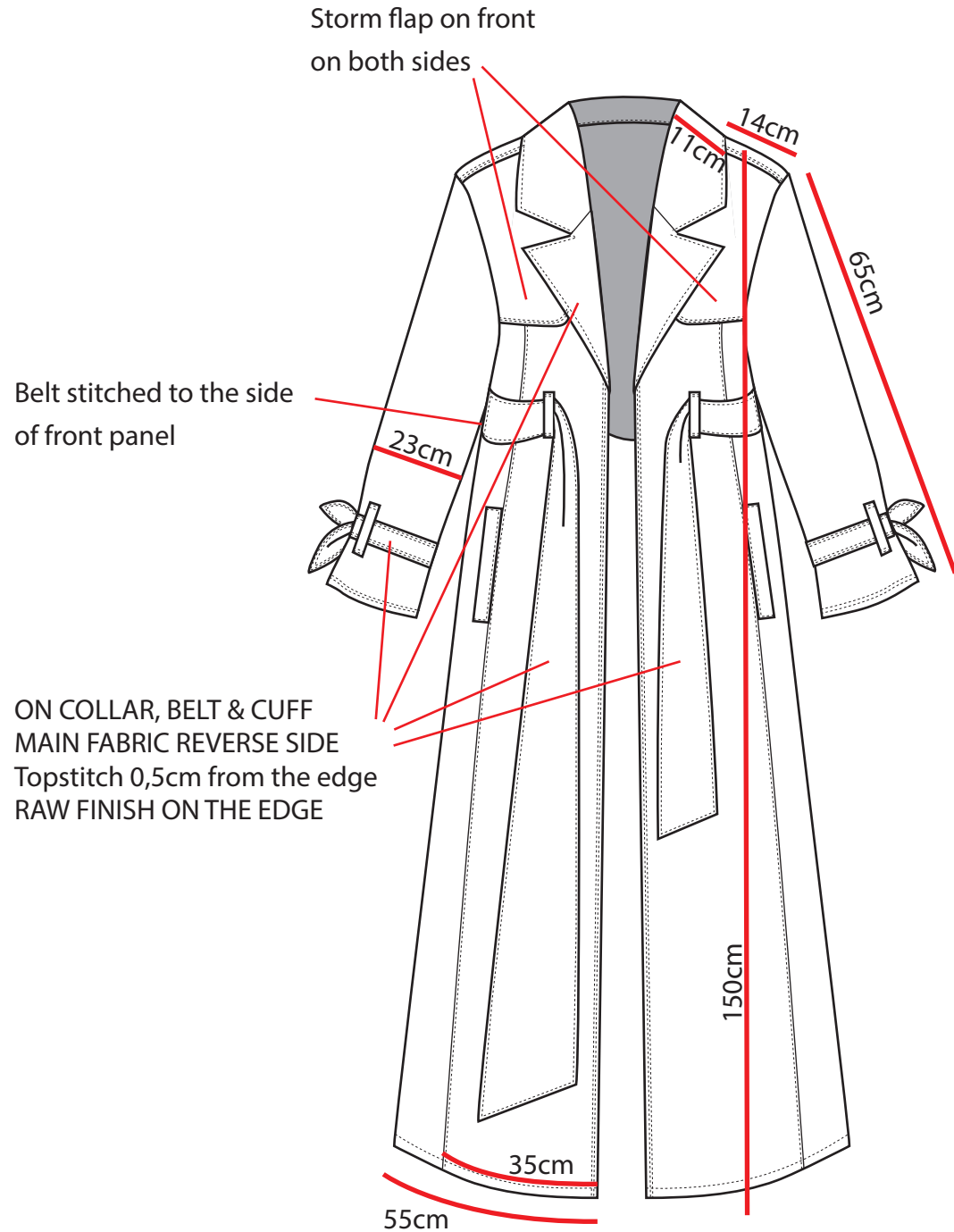


BACKLESS TRENCH COAT 2/10

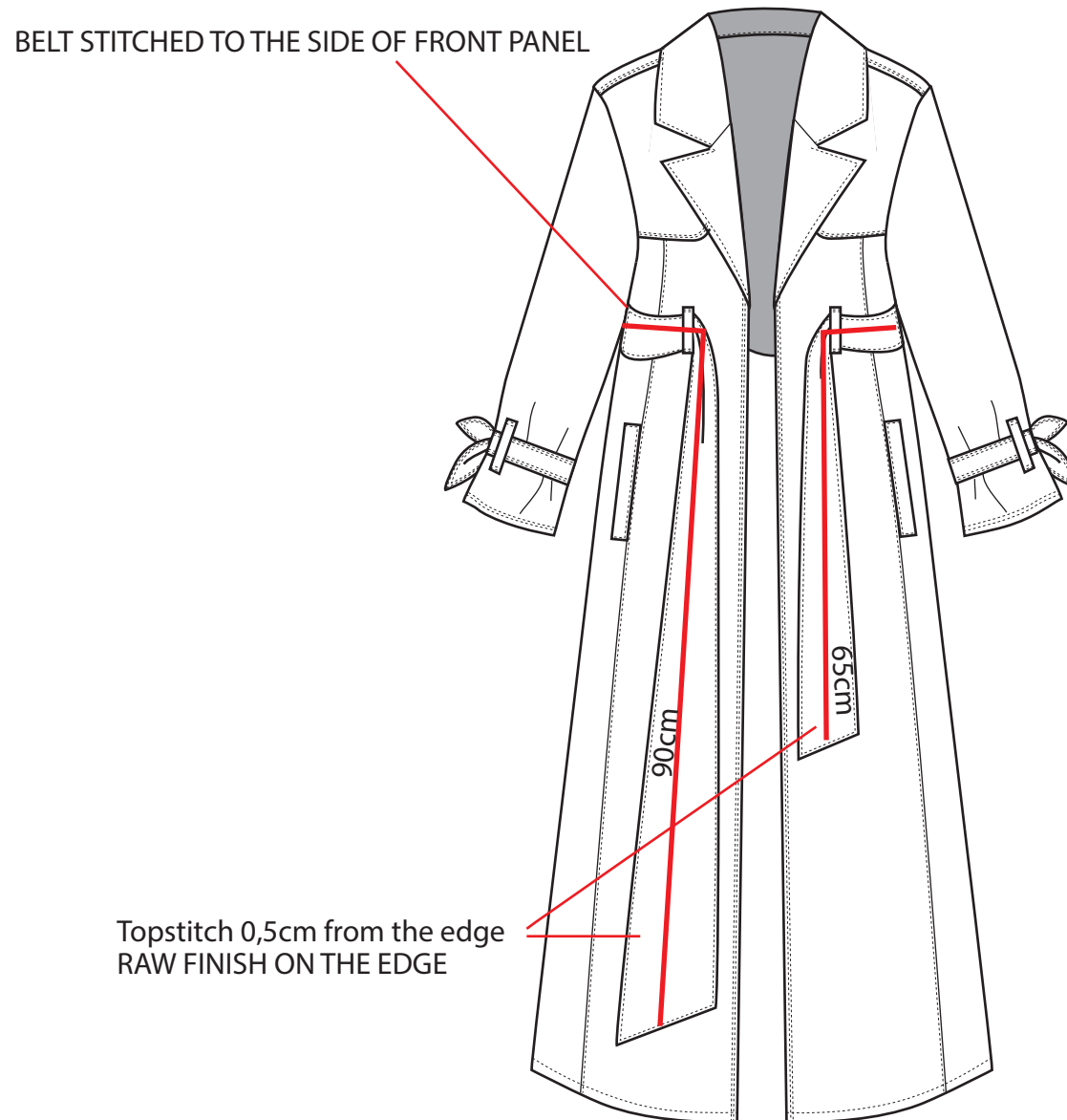
FIT AND DIMENSIONS

- SLIGHTLY OVERSIZED FIT
- > longer shoulder line, longer sleeves, bigger collar
- SLIGHTLY A-SHAPED FRONT PANELS, BACK PANELS MISSING
- ANKLE LENGHT
- NO CLOSURE ON FRONT

FIT REFERENCE FOR
OVERSIZE FIT AND WIDE COLLAR



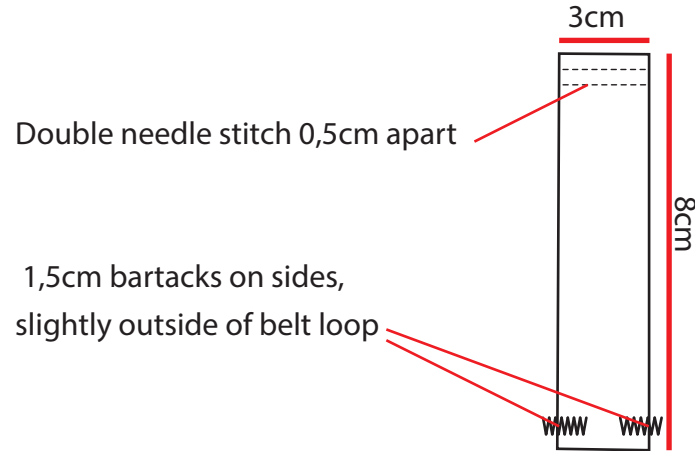
BACKLESS TRENCH COAT 4/10
BELT DETAILS



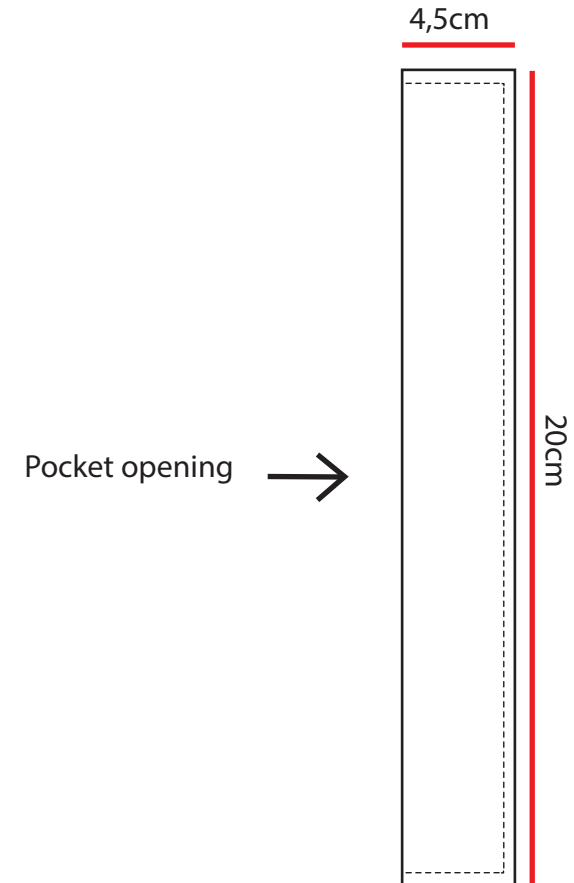
BACKLESS TRENCH COAT 5/10

BELT LOOP, CUFF BELT & POCKET

BELT LOOP ON CUFF AND WAIST:

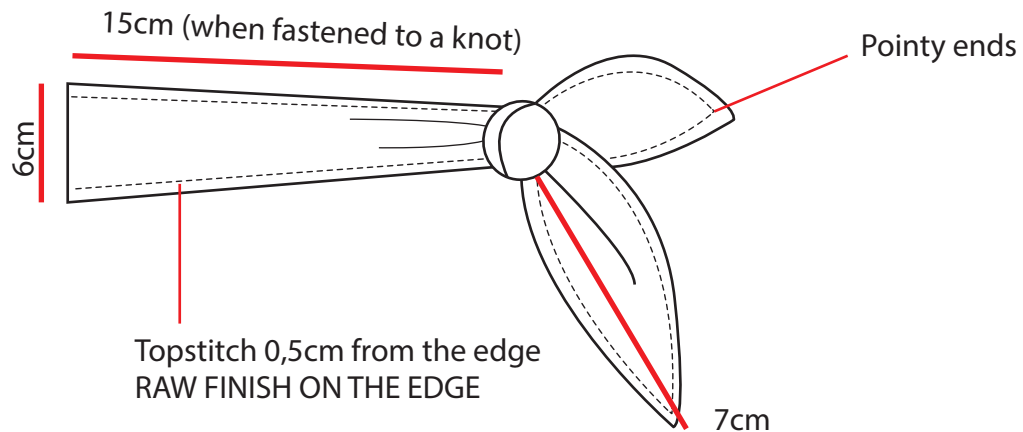


POCKET:



CUFF BELT:

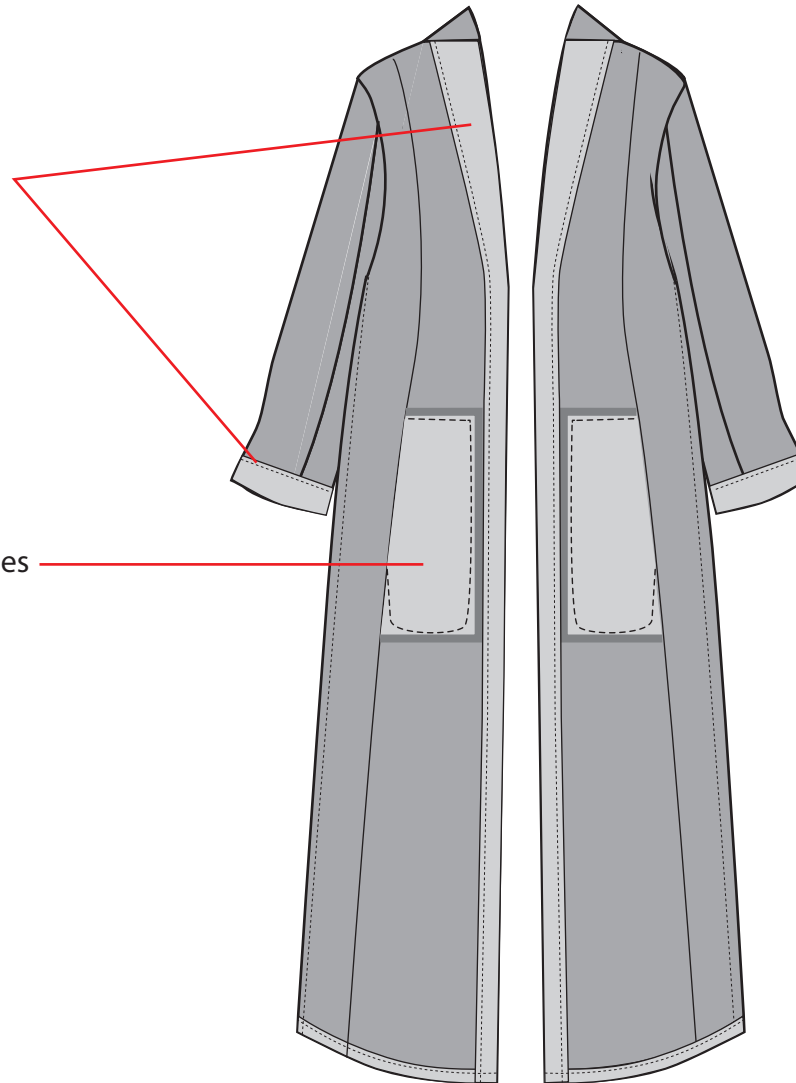
Cuff closed by a knot



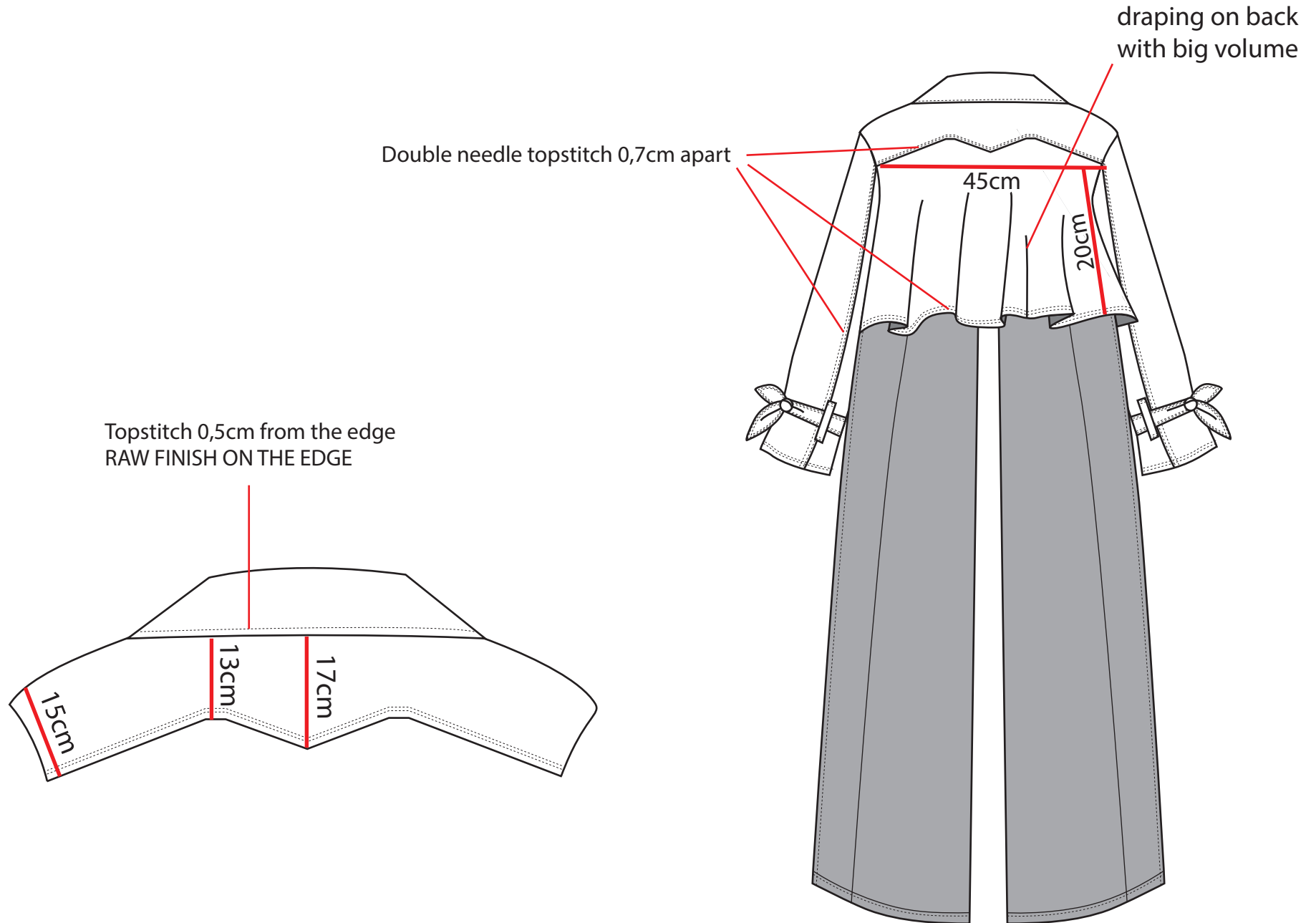
BACKLESS TRENCH COAT 6/10
FACING & POCKETING

FACING ON FRONT AND CUFFS
Main fabric correct side visible

POCKETING
Pocketing out of main material,
Correct side visible,
wrong side of same fabric used as trim on edges



BACKLESS TRENCH COAT 3/10
BACK



BACKLESS TRENCH COAT 7/10

THREADS



TOPSTITCH MARKED WITH RED
Matched to the base color

TOPSTITCH MARKED WITH GREEN
Dusty pink (PANTONE 19-1015 TPX)

BACKLESS TRENCH COAT 10/10

FABRIC

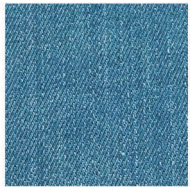
MAIN FABRIC:

– 47986

CONTRAST FABRIC (MARKED IN RED):

– 47986

WRONG SIDE OUT



Code: 47986

Composition:

94.5% Cotton
2.5% Elastane
3% Polyester

Category:

Stretch Fabric

Concept:

ISKO Future Face™ Twill

Technology:

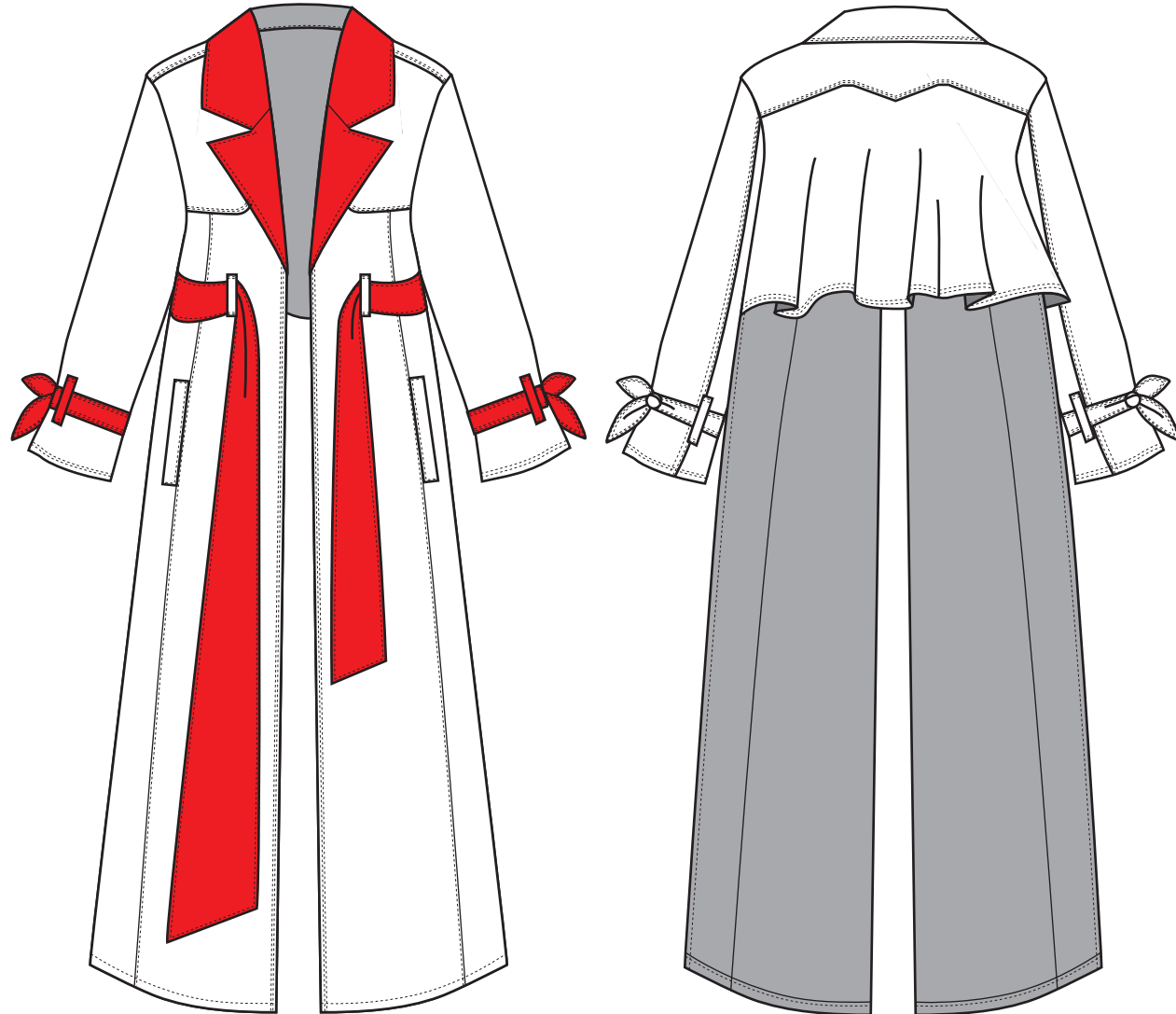
ISKO Recall™

Weight:

Oz 12.75

Weave Description:

Particular fabric with a denim look, but ISKO Future Face™ technology. It feels like a sweatshirt to the touch. Adapted to all kinds of treatment.



BACKLESS TRENCH COAT 8/10

WASH REFERENCE

BRIGHT BLUE INDIGO BASE WITH RINSE WASH

- Dark, relatively even coloring all over
- High/low effect visible on seams, slightly worn look



BACKLESS TRENCH COAT 9/10

LABELLING

